

DIAB DOLPHICAM IN A BOX

DOLPHICAM IN A BOX (DIAB) WAS DESIGNED AND MANUFACTURED DUE TO INDUSTRY-DRIVEN NEED

The DIAB is a lightweight portable, self-sustained inspection system to go anywhere, anytime, even in the tightest of confined spaces.

DIAB encompasses all the MAUT technology whilst providing the user with the opportunity to have a slim touchscreen strapped to your hand; the transducer, in the other hand, all connected to the pelican case outside the structure being inspected providing all the power, computing capability, and also additional ports to plug in external monitors.



USABILITY

The 10-inch touchscreen provides the full dolphicam2 capabilities allowing the user to go up to 5m/15-foot from the pelican case.

The system weighs in at only 9.5kg/21lbs in total, this light and transportable pelican case contains everything to do an inspection anywhere, with its transducers, own power supply, and the potential to plug into a 110v power.

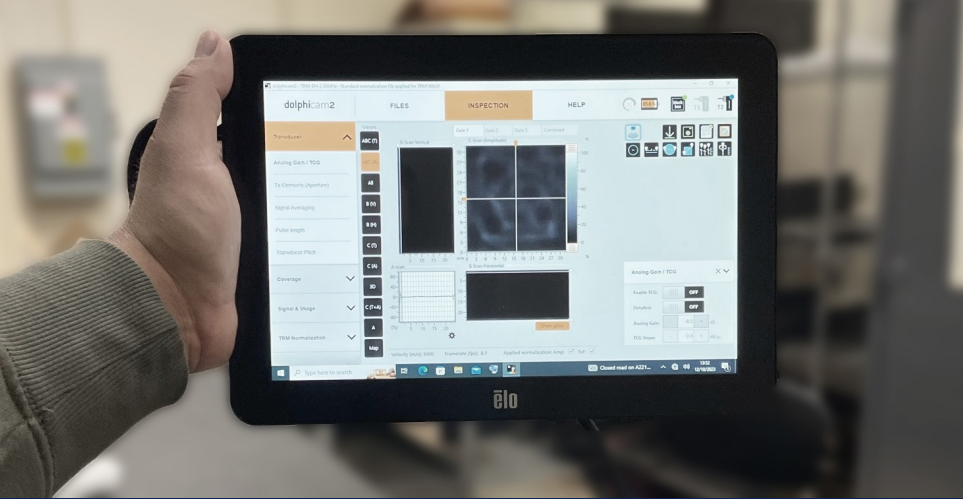
An optional additional pelican case can provide a portable battery bank.



GO ANYWHERE WITH THE DIAB

Whether inspecting with standard Pulse-Echo mode or MxTTU (Matrix Through Transmission Ultrasound) the DIAB supports these 2 users modes.





Specification

Requirement

Durable case to fully contained

Black Box

PC

10" touchscreen

Monitor cables and fixtures

2 x TRM with 5m cables

Additional Features

60+ minute battery life

Minimal size

Minimal weight

Additional User Access Sockets

Up to 2 x TRM connections

Portable Monitor Connection

USB C Display port monitor plug

External power

HDMI monitor port

Dolphitech Compliance

Pelican case utilised

Black Box installed

Intel NUC i7 32GB RAM

Full LCD & touch panel

Video-over-USBC enabled

Space has been created to house 2 x TRMs in the lid

Internal battery is a fast charge 96Wh (flight safe) with integrated rapid charger.

BlackBox battery charges concurrently with the main internal battery.

Both batteries will charge while the system in in use.

A small Pelican case contains everything for the DIAB

Weight is 9.5kg/20lbs

2 x USB C ports are provided

External monitor connection is provided

USB C display monitor plug provided

110v socket

HDMI monitor port provided

